

LECIEN

Durham Quilt Collection - Anew

by Brenda Riddle of
Acorn Quilt & Gift Company



Path to
Durham

free
pattern



41" x 41"



15" x 54"

To view the *Durham Collection-Anew* fabric collection, & to download Brenda Riddle's free pattern, please visit www.lecien.co.jp/en/hobby/ or www.lecienusa.com/free-patterns/



LECIEN

Durham Quilt Collection - Anew



by Brenda Riddle of
Acorn Quilt & Gift Company

YARDAGE REQUIREMENTS:

FOR SQUARE TABLE-TOPPER -

- 1³/₈ yard for background - warm grey main floral (30428-90)
- 1/4 yard for 'path' - white with warm grey dots (30433-10)
- 1/4 yard for backing • 3/8 yard for binding - warm grey tiny floral (30431-90)

FOR TABLE-RUNNER

- 3/4 yard for background - 'A' - white w/warm grey dots (30433-10), or 'B' - yellow tiny floral (30431-50)
- 1/4 yard for 'rick-rack path' - 'A' blue tonal (30431-70), or 'B' - red on red dots (30433-30)
- 1 1/4 yard for backing • 1/4 yard for binding • (optional) 3/4" wide rick rack - 4 yards

CUTTING:

SQUARE TABLE-TOPPER:

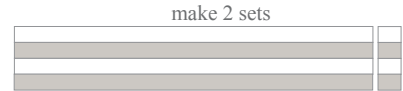
- From warm grey main floral, cut: one (1) 27 1/2" x 41 1/2" rectangle, four (4) 2" strips, & two (2) 5" strips.
- From white w/ warm grey dots, cut four (4) 2" strips.

TABLE-RUNNER:

- From background fabric, cut: four (4) 2" strips, one (1) 5" strip, & three (3) 3 1/2 strips.
- From 'rick-rack path' fabric, cut four (4) 2" strips.

RICK-RACK PATH BLOCKS:

1. To make the path blocks, sew together the two (2) 2" background strips to the two (2) 2" 'rick-rack path' strips as shown. Press seams toward darker fabric.
2. Repeat to make two strip sets.



make 2 sets

- for square table-topper, cut 27
- for table-runner, cut 36

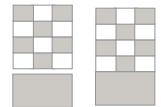
- For square table-topper, cut 27 - 2" units
- For table-runner, cut 36 - 2" units



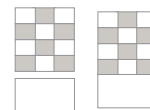
- for square table-topper, make 9
- for table-runner, make 12

3. Sew together three (3) of the units as shown. Press seams open.

4. • For the square table-topper, take one of the 5" background strips & from it cut nine (9) 3 1/2" x 5" rectangles.
• Sew a 3 1/2" x 5" rectangle to each of the nine sections, as shown. Press seams toward rectangle.



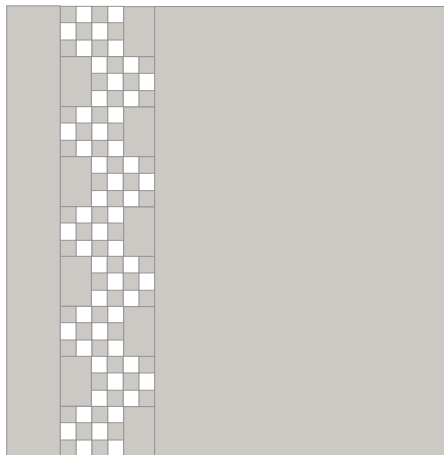
- For the table-runner, from the background 5" strip, cut twelve (12) 3 1/2" x 5" rectangles.
• Sew a 3 1/2" x 5" rectangle to each of the nine sections, as shown. Press seams toward rectangle.



QUILT TOP ASSEMBLY:

For square table-topper, sew together the nine blocks as shown (press seams open), & sew the remaining 5" background strip to the left side of the 'rick'rack path' section & the 27 1/2" x 41 1/2" rectangle to the right side, as shown.

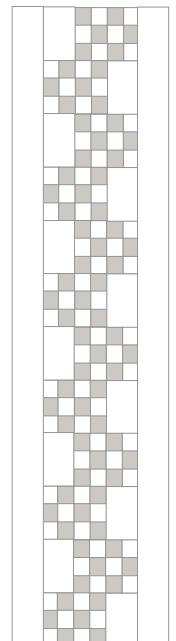
Press seams toward backgrounds.



41" x 41"

For table-runner, sew together the twelve blocks as shown (press seams open), & sew 3 1/2" background strip to each side of the 'rick'rack path' section as shown.

Press seams toward backgrounds.



15" x 54"

- Quilt & bind as desired. • For the table-runners, I used a rick-rack trim as an option. Simply baste rick-rack to edges of quilt before stitching on binding. After binding is stitched on edges, turn binding completely to the back of the quilt & stitch down. This will expose the rick-rack trim along the edges of the table-runner.

