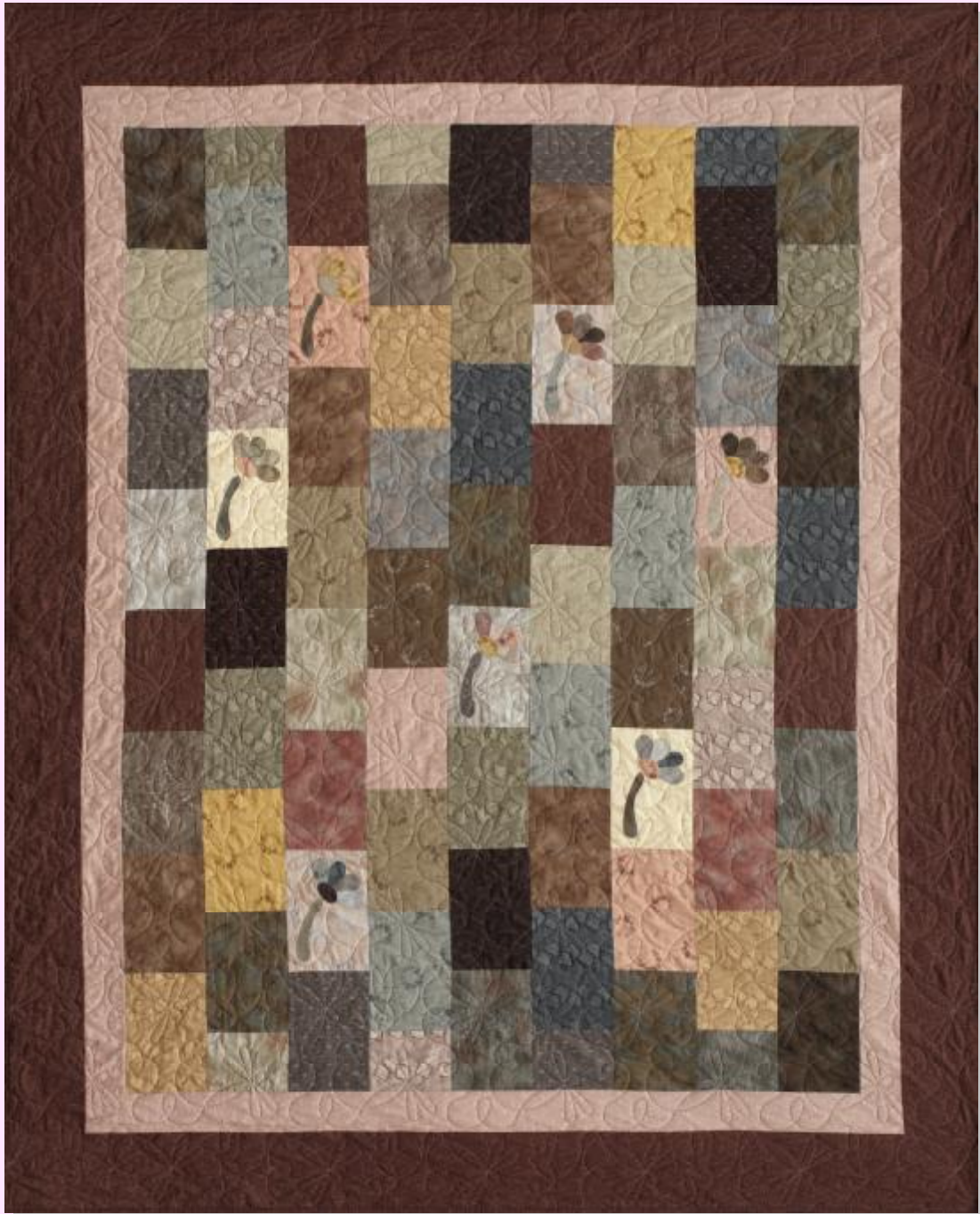


# Miss Maisie's Garden

A FREE PATTERN Designed by KYLIE IRVINE for LECIEN,  
using Centenary Collection XVI, Finished Size 72" X 90"



Requirements: At least 20 long or fat quarters for blocks and appliqué,  
1 yd for inner border - fabric # 8256-20, 1 5/8 yds for border - fabric # 8254-40,  
3/4 yd for binding - fabric # 8254-40, 5 1/2 yds for backing - fabric # 8253-60

kylie+irvine  
BE INSPIRED

Visit [www.lecien.co.jp/en/hobby](http://www.lecien.co.jp/en/hobby) to view  
Centenary Collection and download  
Kylie Irvine's free pattern. For more patterns  
by Kylie Irvine visit [www.kylieirvine.com](http://www.kylieirvine.com).  
Quilting by Julie Barnes

LECIEN

## CUTTING

From your long or fat quarters: cut 68 rectangles 6 1/2" x 9 1/2" and 8 rectangles 5" x 6 1/2"

Inner Border: cut 8 strips 3 1/2" wide by 42"

Outer Border: cut 8 strips 6 1/2" wide x 42"

Binding: cut 9 strips 2 1/2" wide x 42"

## CONSTRUCTION

All seams allowances are 1/4" and seams are all pressed to one side.

Following the picture on the front, lay out all the rectangles, so that you have five columns with 8 large rectangles each, and four columns with 7 large rectangles and two small rectangles at each end. Choose where to appliqué your flowers, and using your favourite appliqué method stitch these onto the rectangles.

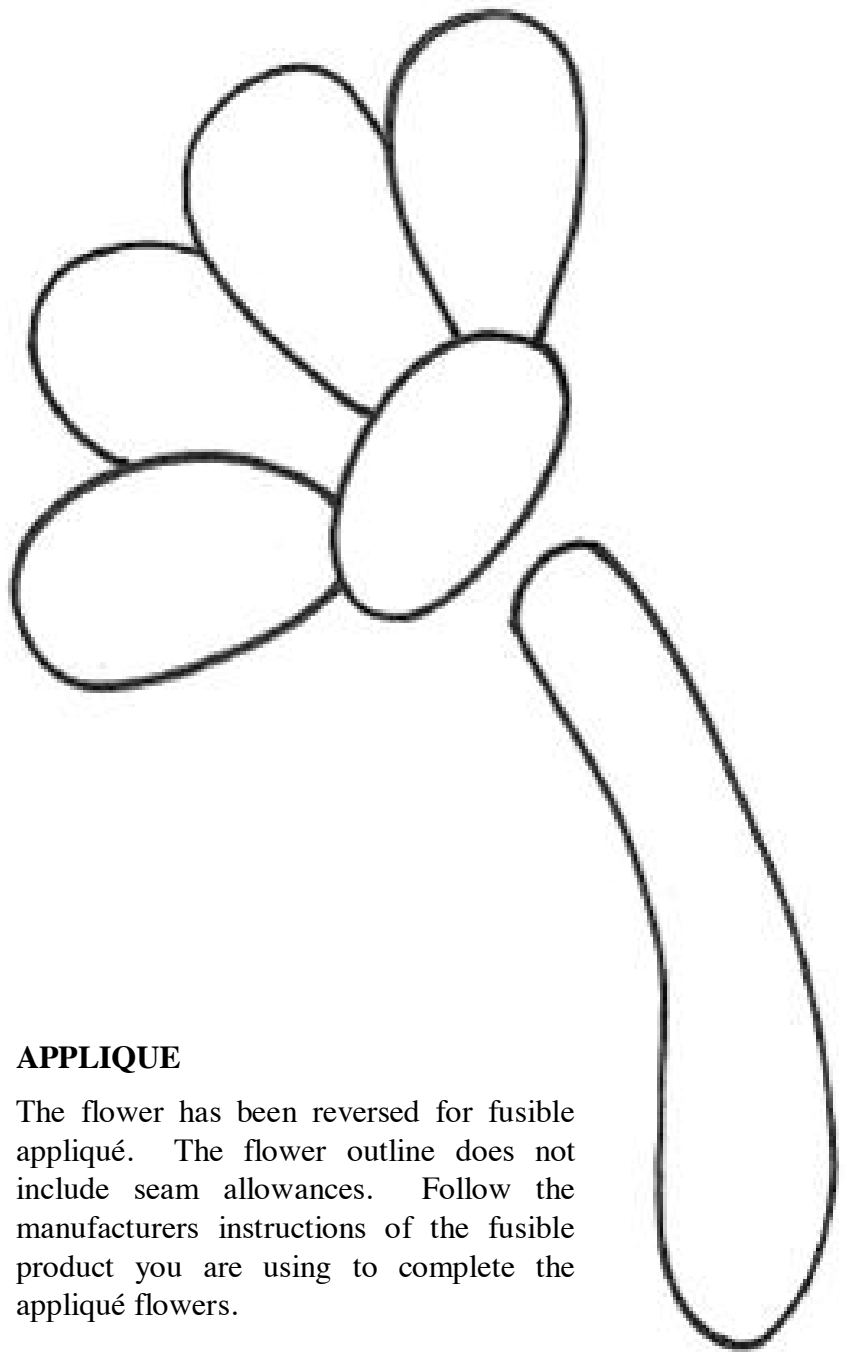
Stitch the columns of rectangles together, and then stitch each column to the next. Your quilt middle should measure 54 1/2" x 72 1/2".

## BORDERS & BINDING

Stitch two border strips together along the 3 1/2" seam, repeat to make four sets. Measure your quilt sides and trim the borders to fit, stitch in place. Measure your quilt top and bottom, trim the border strips to fit and stitch in place.

Repeat the above steps for outer border using 6 1/2" strips.

Your quilt is now ready to layer with wadding and backing ready for quilting by hand or machine.



## APPLIQUE

The flower has been reversed for fusible appliqué. The flower outline does not include seam allowances. Follow the manufacturers instructions of the fusible product you are using to complete the appliqué flowers.